



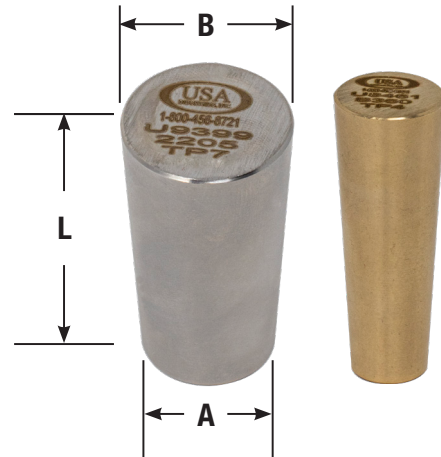
# Metal Tapered Tube Plugs

The Industry Standard for Permanently Plugging Leaks in Heat Exchangers, Boilers & Condensers



## TUBE PLUG SIZING CHART

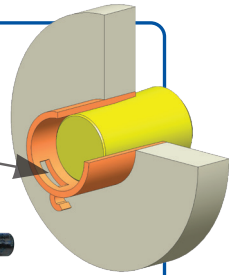
PART NO.	TUBE O.D. (in.)	GAUGE	DIMENSION (in.) + / - .005		
			"A" Small End	"B" Large End	"L" Length
TP - 1 - "<>"	1/4	18 - 24	0.141	0.235	1-1/4
	3/8	12 - 14			
TP - 2 - "<>"	3/8	15 - 24	0.213	0.371	1-3/4
	1/2	13 - 15			
TP - 3 - "<>"	1/2	15 - 24	0.337	0.495	
	5/8	12 - 14			
TP - 4 - "<>"	5/8	14 - 24	0.449	0.625	
	3/4	10 - 14			
TP - 5 - "<>"	3/4	14 - 24	0.564	0.750	
	7/8	10 - 13			
	1	8 - 9			
TP - 6 - "<>"	7/8	15 - 24	0.706	0.875	
	1	10 - 15			
TP - 7 - "<>"	1	13 - 18	0.776	0.934	
	1	18 - 24			
TP - 8 - "<>"	1	18 - 24	0.892	1.050	
	1-1/8	13 - 17			
TP - 9 - "<>"	1-1/8	15 - 24	0.949	1.125	2
	1-1/4	10 - 14			
TP - 10 - "<>"	1-1/4	13 - 19	1.010	1.186	
TP - 11 - "<>"	1-1/4	19 - 24	1.147	1.323	
TP - 12 - "<>"	1-1/2	10 - 24	1.200	1.495	
TP - 13 - "<>"	1-1/2	14 - 24	1.305	1.600	3
	1-3/4	6 - 13			
TP - 14 - "<>"	1-3/4	14 - 22	1.575	1.870	
	2	6 - 13			
TP - 15 - "<>"	2	12 - 22	1.700	1.995	
TP - 16 - "<>"	2-1/4	6 - 13	1.805	2.100	
TP - 17 - "<>"	2-1/2	5 - 18	2.000	2.375	
TP - 18 - "<>"	2-3/4	4 - 10	2.232	2.500	
TP - 19 - "<>"	3	5 - 12	2.524	2.834	
TP - 20 - "<>"	3	10 - 23	2.625	3.000	
TP - 21 - "<>"	3-1/4	7 - 14	2.875	3.125	
TP - 22 - "<>"	3-1/4	13 - 23	3.010	3.250	
TP - 23 - "<>"	3-1/2	7 - 12	3.125	3.375	
TP - 24 - "<>"	3-1/2	13 - 23	3.260	3.500	
TP - 25 - "<>"	3-3/4	5 - 12	3.274	3.567	
TP - 26 - "<>"	3-3/4	13 - 23	3.510	3.750	
TP - 27 - "<>"	4	5 - 12	3.524	3.817	
TP - 28 - "<>"	4	13 - 23	3.782	4.000	



USA Industries' Metal Tapered tube plugs are a one-piece tapered design that are easily installed so you can establish a positive seal with minimal driving in just seconds. With more than 20 metals in stock, we can produce more than 5,000 plugs per day, and are happy to machine them according to your specifications.

**NOTE:** Always puncture the tube before installing any plug to ensure that pressure cannot build up and cause the plugs to loosen or blow out of the tube.

Be sure to ask us about our **One Rev Cutters** for puncturing tubes.



### Available in the following metals:

Aluminum Bronze	Alloy 20	2205 Duplex
Carbon Steel: A-36, A-105, LF2, 1018, 1200	Chrome / Moly: F-5, F-9, F-22	Stainless Steel: 204, 316, 321, 416, 17-4
Brass: 360, Naval, Admiralty	Copper-Nickel: 90 / 10, 70 / 30	Monel: 400, 405, 500
Inconel: 600, 625, 800	Hastelloy: B2, C276	Titanium

Special materials available such as Ferralium, Nitronic, Tantalum, Waspalloy, Zircalloy, Zircorium and many more.

### When Ordering Specify:

- TP# based on size of your plug (see chart)
- Material of construction
- For custom plugs, provide "A" "B" & "L" dimensions
- Quantity
- Delivery Date

"<>" = replace "<>" with material of construction required - see Chart above.

**WARNING:** Never stand in front of an installed plug under pressure. Plugs ejected under pressure can cause serious bodily injury.

For more information on USA Industries products, contact us at (713) 941-3797 or go to [www.USAIindustries.com](http://www.USAIindustries.com)