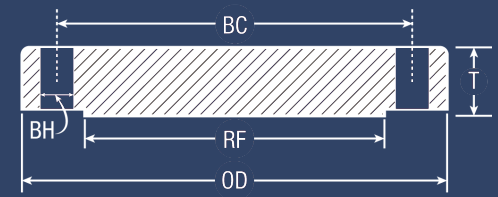




ASME B16.5 & B16.47 BLIND FLANGE SPECIFICATIONS

Call for more info. (800) 456-8721 • (713) 941-3797 • www.USAIindustries.com



NPS	CLASS 150 ASME B16.5						300 ASME B16.5						600 ASME B16.5						900 ASME B16.5					
	OD OF FLANGE (OD)	DIAMETER OF BOLT CIRCLE (BC)	DIAMETER OF RAISED FACE (RF)	NO. OF BOLT HOLES	DIAMETER OF BOLT HOLES (BH)	BLIND THICKNESS (T)	OD OF FLANGE (OD)	DIAMETER OF BOLT CIRCLE (BC)	DIAMETER OF RAISED FACE (RF)	NO. OF BOLT HOLES	DIAMETER OF BOLT HOLES (BH)	BLIND THICKNESS (T)	OD OF FLANGE (OD)	DIAMETER OF BOLT CIRCLE (BC)	DIAMETER OF RAISED FACE (RF)	NO. OF BOLT HOLES	DIAMETER OF BOLT HOLES (BH)	BLIND THICKNESS (T)	OD OF FLANGE (OD)	DIAMETER OF BOLT CIRCLE (BC)	DIAMETER OF RAISED FACE (RF)	NO. OF BOLT HOLES	DIAMETER OF BOLT HOLES (BH)	BLIND THICKNESS (T)
1/2	3.50	2.38	1.38	4	0.63	0.44	3.75	2.63	1.38	4	(BH)	0.56	3.75	2.62	1.38	4	0.62	0.56	4.75	3.25	1.38	4	0.88	0.88
3/4	3.88	2.75	1.69	4	0.63	0.50	4.62	3.25	1.69	4	0.75	0.63	4.62	3.25	1.69	4	0.75	0.63	5.12	3.50	1.69	4	0.88	1.00
1	4.25	3.12	2.00	4	0.63	0.56	4.88	3.50	2.00	4	0.75	0.69	4.88	3.50	2.00	4	0.75	0.69	5.88	4.00	2.00	4	1.00	1.13
1-1/4	4.62	3.50	2.50	4	0.63	0.63	5.25	3.88	2.50	4	0.75	0.75	5.25	3.88	2.50	4	0.75	0.81	6.25	4.38	2.50	4	1.00	1.13
1-1/2	5.00	3.88	2.88	4	0.63	0.69	6.12	4.50	2.88	4	0.88	0.81	6.12	4.50	2.88	4	0.88	0.88	7.00	4.88	2.88	4	1.13	1.25
2	6.00	4.75	3.63	4	0.75	0.75	6.50	5.00	3.63	8	0.75	0.88	6.50	5.00	3.63	8	0.75	1.00	8.50	6.50	3.63	8	1.00	1.50
2-1/2	7.00	5.50	4.13	4	0.75	0.88	7.50	5.88	4.13	8	0.88	1.00	7.50	5.88	4.13	8	0.88	1.13	9.62	7.50	4.13	8	1.13	1.63
3	7.50	6.00	5.00	4	0.75	0.94	8.25	6.63	5.00	8	0.88	1.13	8.25	6.62	5.00	8	0.88	1.25	9.50	7.50	5.00	8	1.00	1.50
3-1/2	8.50	7.00	5.50	8	0.75	0.94	9.00	7.25	5.50	8	0.88	1.19	9.00	7.25	5.50	8	1.00	1.38	-	-	-	-	-	-
4	9.00	7.50	6.19	8	0.75	0.94	10.00	7.88	6.19	8	0.88	1.25	10.75	8.50	6.19	8	1.00	1.50	11.50	9.25	6.19	8	1.25	1.75
5	10.00	8.50	7.31	8	0.88	0.94	11.00	9.25	7.31	8	0.88	1.38	13.00	10.50	7.31	8	1.12	1.75	13.75	11.00	7.31	8	1.38	2.00
6	11.00	9.50	8.50	8	0.88	1.00	12.50	10.63	8.50	12	0.88	1.44	14.00	11.50	8.50	12	1.12	1.88	15.00	12.50	8.50	12	1.25	2.19
8	13.50	11.75	10.63	8	0.88	1.13	15.00	13.00	10.63	12	1.00	1.63	16.50	13.75	10.63	12	1.25	2.19	18.50	15.50	10.63	12	1.50	2.50
10	16.00	14.25	12.75	12	1.00	1.19	17.50	15.25	12.75	16	1.13	1.88	20.00	17.00	12.75	16	1.38	2.50	21.50	18.50	12.75	16	1.50	2.75
12	19.00	17.00	15.00	12	1.00	1.25	20.50	17.75	15.00	16	1.25	2.00	22.00	19.25	15.00	20	1.38	2.63	24.00	21.00	15.00	20	1.50	3.13
14	21.00	18.75	16.25	12	1.13	1.38	23.00	20.25	16.25	20	1.25	2.13	23.75	20.75	16.25	20	1.50	2.75	25.25	22.00	16.25	20	1.63	3.38
16	23.50	21.25	18.50	16	1.13	1.44	25.50	22.50	18.50	20	1.38	2.25	27.00	23.75	18.50	20	1.63	3.00	27.75	24.25	18.50	20	1.75	3.50
18	25.00	22.75	21.00	16	1.25	1.56	28.00	24.75	21.00	24	1.38	2.38	29.25	25.75	21.00	20	1.75	3.25	31.00	27.00	21.00	20	2.00	4.00
20	27.50	25.00	23.00	20	1.25	1.69	30.50	27.00	23.00	24	1.38	2.50	32.00	28.50	23.00	24	1.75	3.50	33.75	29.50	23.00	20	2.13	4.25
22	29.50	27.25	25.25	20	1.38	1.81	33.00	29.25	25.25	24	1.63	2.63	34.25	30.63	25.25	24	1.88	3.75	-	-	-	-	-	-
24	32.00	29.50	27.25	20	1.38	1.88	36.00	32.00	27.25	24	1.63	2.75	37.00	33.00	27.25	24	2.00	4.00	41.00	35.50	27.25	20	2.63	5.50

SERIES A

NPS	CLASS 150 ASME B16.47						300 ASME B16.47						600 ASME B16.47						900 ASME B16.47					
	OD OF FLANGE (OD)	DIAMETER OF BOLT CIRCLE (BC)	DIAMETER OF RAISED FACE (RF)	NO. OF BOLT HOLES	DIAMETER OF BOLT HOLES (BH)	BLIND THICKNESS (T)	OD OF FLANGE (OD)	DIAMETER OF BOLT CIRCLE (BC)	DIAMETER OF RAISED FACE (RF)	NO. OF BOLT HOLES	DIAMETER OF BOLT HOLES (BH)	BLIND THICKNESS (T)	OD OF FLANGE (OD)	DIAMETER OF BOLT CIRCLE (BC)	DIAMETER OF RAISED FACE (RF)	NO. OF BOLT HOLES	DIAMETER OF BOLT HOLES (BH)	BLIND THICKNESS (T)	OD OF FLANGE (OD)	DIAMETER OF BOLT CIRCLE (BC)	DIAMETER OF RAISED FACE (RF)	NO. OF BOLT HOLES	DIAMETER OF BOLT HOLES (BH)	BLIND THICKNESS (T)
26	34.25	31.75	29.50	24	1.38	2.63	38.25	34.50	29.50	28	1.75	3.25	40.00	36.00	29.50	28	2.00	4.94	42.75	37.50	29.50	20	2.88	6.31
28	36.50	34.00	31.50	28	1.38	2.75	40.75	37.00	31.50	28	1.75	3.50	42.25	38.00	31.50	28	2.12	5.19	46.00	40.25	31.50	20	3.12	6.75
30	38.75	36.00	33.75	28	1.38	2.88	43.00	39.25	33.75	28	1.88	3.69	44.50	40.25	33.75	28	2.12	5.50	48.50	42.75	33.75	20	3.12	7.18
32	41.75	38.50	36.00	28	1.62	3.13	45.25	41.50	36.00	28	2.00	3.88	47.00	42.50	36.00	28	2.38	5.81	51.75	45.50	36.00	20	3.38	7.62
34	43.75	40.50	38.00	32	1.62	3.19	47.50	43.50	38.00	28	2.00	4.07	49.00	44.50	38.00	28	2.38	6.06	55.00	48.25	38.00	20	3.62	8.06
36	46.00	42.75	40.25	32	1.62	3.50	50.00	46.00	40.25	32	2.12	4.32	51.75	47.00	40.25	28	2.62	6.38	57.50	50.75	40.25	20	3.62	8.44
38	48.75	45.25	42.25	32	1.62	3.38	46.00	43.00	40.50	32	1.62	4.19	50.00	45.75	41.50	28	2.38	6.12	57.50	50.75	43.25	20	3.62	8.50
40	50.75	47.25	44.25	36	1.62	3.50	48.75	45.50	42.75	32	1.75	4.44	52.00	47.75	43.75	32	2.38	6.38	59.50	52.75	45.75	24	3.62	8.81
42	53.00	49.50	47.00	36	1.62	3.75	50.75	47.50	44.75	32	1.75	4.63	55.25	50.50	46.00	28	2.62	6.75	61.50	54.75	47.75	24	3.62	9.12
44	55.25	51.75	49.00	40	1.62	3.94	53.25	49.75	47.00	32	1.88	4.82	57.25	52.50	48.25	32	2.62	7.00	64.88	57.62	50.00	24	3.88	9.56
46	57.25	53.75	51.00	40	1.62	4.00	55.75	52.00	49.00	28	2.00	5.00	59.50	54.75	50.25	32	2.62	7.31	68.25	60.50	52.50	24	4.12	10.06
48	59.50	56.00	53.50	44	1.62	4.19	57.75	54.00	51.25	32	2.00	5.19	62.75	57.50	52.50	32	2.62	7.69	70.25	62.50	54.50	24	4.12	10.38
50	61.75	58.25	55.50	44	1.88	4.32	60.25	56.25	53.50	32	2.12	5.44	65.75	60.00	54.50	28	3.12	8.00	-	-	-	-	-	-
52	64.00	60.50	57.50	44	1.88	4.50	62.25	58.25	-	32	2.12	5.63	67.75	62.00	-	32	3.12	8.25	-	-	-	-	-	-
54	66.25	62.75	59.50	44	1.88	4.69	65.25	61.00	-	28	2.38	5.94	70.00	64.25	-	32	3.12	8.56	-	-	-	-	-	-
56	68.75	65.00	62.00	48	1.88	4.82	67.25	63.00	-	28	2.38	6.00	73.00	66.75	-	32	3.38	8.88	-	-	-	-	-	-
58	71.00	67.25	64.00	48	1.88	5.00	69.25	65.00	-	32	2.38	6.19	75.00	68.75	-	32	3.38	9.12	-	-	-	-	-	-
60	73.00	69.25	66.00	52	1.88	5.13	71.25	67.00	-	32	2.38	6.38	78.50	71.75	-	28	3.62	9.56	-	-	-	-	-	-

SERIES B

NPS	CLASS 150 ASME B16.47						300 ASME B16.47						600 ASME B16.47						900 ASME B16.47					
	OD OF FLANGE (OD)	DIAMETER OF BOLT CIRCLE (BC)	DIAMETER OF RAISED FACE (RF)	NO. OF BOLT HOLES	DIAMETER OF BOLT HOLES (BH)	BLIND THICKNESS (T)	OD OF FLANGE (OD)	DIAMETER OF BOLT CIRCLE (BC)	DIAMETER OF RAISED FACE (RF)	NO. OF BOLT HOLES	DIAMETER OF BOLT HOLES (BH)	BLIND THICKNESS (T)	OD OF FLANGE (OD)	DIAMETER OF BOLT CIRCLE (BC)	DIAMETER OF RAISED FACE (RF)	NO. OF BOLT HOLES	DIAMETER OF BOLT HOLES (BH)	BLIND THICKNESS (T)	OD OF FLANGE (OD)	DIAMETER OF BOLT CIRCLE (BC)	DIAMETER OF RAISED FACE (RF)	NO. OF BOLT HOLES	DIAMETER OF BOLT HOLES (BH)	BLIND THICKNESS (T)
26	30.94	29.31	28.00	36	0.88	1.75	34.12	31.62	29.00	32	1.38	3.50	35.00	31.75	28.62	28	1.75	4.38	40.25	35.50	30.00	20	2.62	6.06
28	32.94	31.31	30.00	40	0.88	1.88	36.25	33.75	31.00	36	1.38	3.50	37.50	34.00	30.88	28	1.88	4.56	43.50	38.25	32.25	20	2.88	6.56
30	34.94	33.31	32.00	44	0.88	2.00	39.00	36.25	33.25	36	1.50	3.69	40.25	36.50	33.12	28	2.00	5	46.50	40.75	34.50	20	3.12	6.93
32	37.06	35.44	34.00	48	0.88	2.12	41.50	38.50	35.50	32	1.62	4.06	42.75	38.75	35.25	28	2.12	5.31	48.75	43.00	36.50	20	3.12	7.31
34	39.56	37.69	36.25	40	1.00	2.25	43.62	40.62	37.50	36	1.62	4.06	45.75	41.50	37.50	24	2.38	5.68	51.75	45.50	39.00	20	3.38	7.68
36	41.62	39.75	38.25	44	1.00	2.31	46.12	42.88	39.75	32	1.75	4.06	47.75	43.50	39.75	28	2.38	5.94	53.00	47.25	40.50	24	3.12	7.94
38	44.25	42.12	40.25	40	1.12	2.50	48.12	44.88	41.75	36	1.75	4.38	-	-	-	-	-	-	-	-	-	-	-	-
40	46.25	44.12	42.50	44	1.12	2.62	50.12	46.88	43.88	40	1.75	4.56	-	-	-	-	-	-	-	-	-	-	-	-
42	48.25	46.12	44.50	48	1.12	2.69	52.50	49.00	46.00	36	1.88	4.69	-	-										