



METAL TAPERED TUBE PLUGS

AVAILABLE 24/7 / 365

ORIGIN OF MATERIALS USA	STOCKED SIZES TP-1 — TP-28	PRODUCTION CAPACITY 5,000+ PLUGS PER DAY	CERTIFIED ISO 9001: 2015
-----------------------------------	--------------------------------------	--	------------------------------------



TP SERIES

HAMMER DRIVEN TUBE PLUGS

- One-piece tapered design for fast installation. Available in over 20 alloys and machined to your exact specifications. 5,000+ plugs/day production capacity.



PART NO.	TUBE O.D. (IN)	GAUGE	DIMENSION (IN) + / - .005		
			"A" SMALL END	"B" LARGE END	"L" LENGTH
TP-1 - "< >"	1/4	18 - 24	0.141	0.235	1-1/4
	3/8	12 - 14			
TP-2 - "< >"	3/8	15 - 24	0.213	0.371	1-3/4
	1/2	13 - 15			
TP-3 - "< >"	1/2	15 - 24	0.337	0.495	
	5/8	12 - 14			
TP-4 - "< >"	5/8	14 - 24	0.449	0.625	
	3/4	10 - 14			
TP-5 - "< >"	3/4	14 - 24	0.564	0.750	
	7/8	10 - 13			
TP-6 - "< >"	1	8 - 9	0.706	0.875	
	7/8	15 - 24			
TP-7 - "< >"	1	10 - 15	0.776	0.934	
	1	13 - 18			
TP-8 - "< >"	1	18 - 24	0.892	1.050	
	1-1/8	13 - 17			
TP-9 - "< >"	1-1/8	15 - 24	0.949	1.125	2
	1-1/4	10 - 14			
TP-10 - "< >"	1-1/4	13 - 19	1.010	1.186	
TP-11 - "< >"	1-1/4	19 - 24	1.147	1.323	
TP-12 - "< >"	1-1/2	10 - 24	1.200	1.495	
TP-13 - "< >"	1-1/2	14 - 24	1.305	1.600	
	1-3/4	6 - 13			
TP-14 - "< >"	1-3/4	14 - 22	1.575	1.870	3
	2	6 - 13			
TP-15 - "< >"	2	12 - 22	1.700	1.995	
TP-16 - "< >"	2-1/4	6 - 13	1.805	2.100	
TP-17 - "< >"	2-1/2	5 - 18	2.000	2.375	
TP-18 - "< >"	2-3/4	4 - 10	2.232	2.500	
TP-19 - "< >"	3	5 - 12	2.524	2.834	
TP-20 - "< >"	3	10 - 23	2.625	3.000	
TP-21 - "< >"	3-1/4	7 - 14	2.875	3.125	
TP-22 - "< >"	3-1/4	13 - 23	3.010	3.250	
TP-23 - "< >"	3-1/2	7 - 12	3.125	3.375	
TP-24 - "< >"	3-1/2	13 - 23	3.260	3.500	
TP-25 - "< >"	3-3/4	5 - 12	3.274	3.567	
TP-26 - "< >"	3-3/4	13 - 23	3.510	3.750	
TP-27 - "< >"	4	5 - 12	3.524	3.817	
TP-28 - "< >"	4	13 - 23	3.782	4.000	

Replace "< >" with alloy required - see materials list on page 2.



METAL TAPERED TUBE PLUGS

AVAILABLE 24/7 / 365

ORIGIN OF MATERIALS USA	STOCKED SIZES TP-1 – TP-28	PRODUCTION CAPACITY 5,000+ PLUGS PER DAY	CERTIFIED ISO 9001: 2015
-----------------------------------	--------------------------------------	--	--



MATERIALS

MATERIALS & ORDERING GUIDE



- Stocked in 5 standard alloys and available in over 20 specialty materials. Use the part numbers from the sizing chart on page 1, then specify alloy, quantity, and required delivery date when ordering.

STOCKED ALLOY OPTIONS

Carbon Steel _____	CODE = C
Brass _____	CODE = B
304 SS _____	CODE = 304
316 SS _____	CODE = 316
70/30 CuNi _____	CODE = J

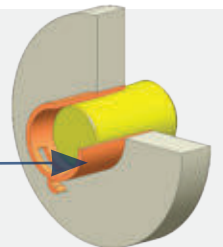
OTHER MATERIALS AVAILABLE UPON REQUEST

CHROMOLY:	F5, F9, F22
STAINLESS STEEL:	321, 416, 17-4, Alloy 20, Super Duplex
INCONEL:	600, 625, 800
MONEL:	400, 405, 500
HASTELLOY:	B2, C276
COPPER NICKEL:	90/10

WHEN ORDERING, SPECIFY

- **TP part number** based on plug size
- **Material** of construction (alloy)
- **Quantity** needed
- Required **delivery date**
- **For customer plugs**, provide “A”, “B”, & “L” dimensions

NOTE: Always puncture the tube before installing any plug to ensure that pressure cannot build up and cause the plugs to loosen or blow out of the tube.



Be sure to ask us about our One-Rev Cutters for puncturing tubes.



SAFETY WARNING:

Never stand in front of an installed plug under pressure. Plugs ejected under pressure can cause serious bodily injury.