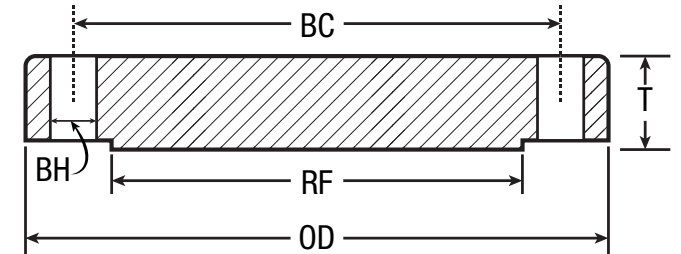




BLIND FLANGES MEET SA105 (CARBON STEEL) SPECIFICATIONS



- Line sizes 1/2" — 96"
- Flange ratings 150# — 2500#
- Raised Face or Ring Type Joint Gasket surfaces
- Provided for either Series A (MSS SP44) or Series B (API 605) meeting ASME B16.47 & B16.48 / ANSI B16.5 and B16.2 specifications
- Other blind specifications A182, A350, B160, etc. can be provided upon request for purchase

NPS	CLASS 150 ANSI B16.5						300 ANSI B16.5						600 ANSI B16.5						900 ANSI B16.5						1500 ANSI 16.5						2500 ANSI B16.5					
	OD OF FLANGE (OD)	DIA. OF BOLT CIRCLE (BC)	DIA. OF RAISED FACE (RF)	NO. OF BOLT HOLES	DIA. OF BOLT HOLE (BH)	BLIND THICKNESS (T)	OD OF FLANGE (OD)	DIA. OF BOLT CIRCLE (BC)	DIA. OF RAISED FACE (RF)	NO. OF BOLT HOLES	DIA. OF BOLT HOLE (BH)	BLIND THICKNESS (T)	OD OF FLANGE (OD)	DIA. OF BOLT CIRCLE (BC)	DIA. OF RAISED FACE (RF)	NO. OF BOLT HOLES	DIA. OF BOLT HOLE (BH)	BLIND THICKNESS (T)	OD OF FLANGE (OD)	DIA. OF BOLT CIRCLE (BC)	DIA. OF RAISED FACE (RF)	NO. OF BOLT HOLES	DIA. OF BOLT HOLE (BH)	BLIND THICKNESS (T)	OD OF FLANGE (OD)	DIA. OF BOLT CIRCLE (BC)	DIA. OF RAISED FACE (RF)	NO. OF BOLT HOLES	DIA. OF BOLT HOLE (BH)	BLIND THICKNESS (T)	OD OF FLANGE (OD)	DIA. OF BOLT CIRCLE (BC)	DIA. OF RAISED FACE (RF)	NO. OF BOLT HOLES	DIA. OF BOLT HOLE (BH)	BLIND THICKNESS (T)
1/2	3.50	2.38	1.38	4	0.62	0.44	3.75	2.62	1.38	4	0.63	0.56	3.75	2.62	1.38	4	0.63	0.56	4.75	3.25	1.38	4	0.88	0.88	4.75	3.25	1.38	4	0.88	0.88	5.25	3.50	1.38	4	0.88	1.19
3/4	3.88	2.75	1.69	4	0.62	0.50	4.62	3.25	1.69	4	0.75	0.62	4.62	3.25	1.69	4	0.75	0.62	5.12	3.50	1.69	4	0.88	1.00	5.12	3.50	1.69	4	0.88	1.00	5.50	3.75	1.69	4	0.88	1.25
1	4.25	3.12	2.00	4	0.62	0.56	4.88	3.50	2.00	4	0.75	0.69	4.88	3.50	2.00	4	0.75	0.69	5.88	4.00	2.00	4	1.00	1.12	5.88	4.00	2.00	4	1.00	1.12	6.25	4.25	2.00	4	1.00	1.38
1-1/4	4.62	3.50	2.50	4	0.62	0.62	5.25	3.88	2.50	4	0.75	0.75	5.25	3.88	2.50	4	0.75	0.81	6.25	4.38	2.50	4	1.00	1.12	6.25	4.38	2.50	4	1.00	1.12	7.25	5.13	2.50	4	1.12	1.50
1-1/2	5.00	3.88	2.88	4	0.62	0.69	6.12	4.50	2.88	4	0.88	0.81	6.12	4.50	2.88	4	0.88	0.88	7.00	4.88	2.88	4	1.12	1.25	7.00	4.88	2.88	4	1.12	1.25	8.00	5.75	2.88	4	1.25	1.75
2	6.00	4.75	3.63	4	0.75	0.75	6.50	5.00	3.62	8	0.75	0.88	6.50	5.00	3.62	8	0.75	1.00	8.50	6.50	3.63	8	1.00	1.50	8.50	6.50	3.63	8	1.00	1.50	9.25	6.75	3.63	8	1.12	2.00
2-1/2	7.00	5.50	4.13	4	0.75	0.88	7.50	5.88	4.12	8	0.88	1.00	7.50	5.88	4.12	8	0.88	1.12	9.62	7.50	4.13	8	1.13	1.62	9.62	7.50	4.13	8	1.12	1.62	10.50	7.75	4.13	8	1.25	2.25
3	7.50	6.00	5.00	4	0.75	0.94	8.25	6.62	5.00	8	0.88	1.12	8.25	6.62	5.00	8	0.88	1.25	9.50	7.50	5.00	8	1.00	1.50	10.50	8.00	5.00	8	1.25	1.88	12.00	9.00	5.00	8	1.38	2.62
3-1/2	8.50	7.00	5.50	8	0.75	0.94	9.00	7.25	5.50	8	0.88	1.19	9.00	7.25	5.50	8	1.00	1.38	-	-	-	-	-	-	-	-	-	-	-	-	-	-	-	-	-	-
4	9.00	7.50	6.19	8	0.75	0.94	10.00	7.88	6.19	8	0.88	1.25	10.75	8.50	6.19	8	1.00	1.50	11.50	9.25	6.19	8	1.25	1.75	12.25	9.50	6.19	8	1.38	2.12	14.00	10.75	6.19	8	1.63	3.00
5	10.00	8.50	7.31	8	0.88	0.94	11.00	9.25	7.31	8	0.88	1.38	13.00	10.50	7.31	8	1.12	1.75	13.75	11.00	7.31	8	1.38	2.00	14.75	11.50	7.31	8	1.63	2.88	16.50	12.75	7.31	8	1.88	3.62
6	11.00	9.50	8.50	8	0.88	1.00	12.50	10.62	8.50	12	0.88	1.44	14.00	11.50	8.50	12	1.12	1.88	15.00	12.50	8.50	12	1.25	2.19	15.50	12.50	8.50	12	1.50	3.25	19.00	14.50	8.50	8	2.12	4.25
8	13.50	11.75	10.63	8	0.88	1.12	15.00	13.00	10.62	12	1.00	1.62	16.50	13.75	10.62	12	1.25	2.19	18.50	15.50	10.63	12	1.50	2.50	19.00	15.50	10.63	12	1.75	3.62	21.75	17.25	10.63	12	2.12	5.00
10	16.00	14.25	12.75	12	1.00	1.19	17.50	15.25	12.75	16	1.12	1.88	20.00	17.00	12.75	16	1.38	2.50	21.50	18.50	12.75	16	1.50	2.75	23.00	19.00	12.75	12	2.00	4.25	26.50	21.25	12.75	12	2.63	6.50
12	19.00	17.00	15.00	12	1.00	1.25	20.50	17.75	15.00	16	1.25	2.00	22.00	19.25	15.00	20	1.38	2.62	24.00	21.00	15.00	20	1.50	3.12	26.50	22.50	15.00	16	2.12	4.88	30.00	24.38	15.00	12	2.88	7.25
14	21.00	18.75	16.25	12	1.12	1.38	23.00	20.25	16.25	20	1.25	2.12	23.75	20.75	16.25	20	1.50	2.75	25.25	22.00	16.25	20	1.63	3.38	29.50	25.00	16.25	16	2.38	5.25	-	-	-	-	-	-
16	23.50	21.25	18.50	16	1.12	1.44	25.50	22.50	18.50	20	1.38	2.25	27.00	23.75	18.50	20	1.63	3.00	27.75	24.25	18.50	20	1.75	3.50	32.50	27.75	18.50	16	2.63	5.75	-	-	-	-	-	-
18	25.00	22.75	21.00	16	1.25	1.56	28.00	24.75	21.00	24	1.38	2.38	29.25	25.75	21.00	20	1.75	3.25	31.00	27.00	21.00	20	2.00	4.00	36.00	30.50	21.00	16	2.88	6.38	-	-	-	-	-	-
20	27.50	25.00	23.00	20	1.25	1.69	30.50	27.00	23.00	24	1.38	2.50	32.00	28.50	23.00	24	1.75	3.50	33.75	29.50	23.00	20	2.13	4.25	38.75	32.75	23.00	16	3.12	7.00	-	-	-	-	-	-
22	29.50	27.25	25.25	20	1.38	1.81	33.00	29.25	25.25	24	1.63	2.63	34.25	30.63	25.25	24	1.75	3.75	-	-	-	-	-	-	-	-	-	-	-	-	-	-	-	-	-	
24	32.00	29.50	27.25	20	1.38	1.88	36.00	32.00	27.25	24	1.63	2.75	37.00	33.00	27.25	24	2.00	4.00	41.00	35.50	27.25	20	2.63	5.50	46.00	39.00	27.25	16	3.63	8.00	-	-	-	-	-	-

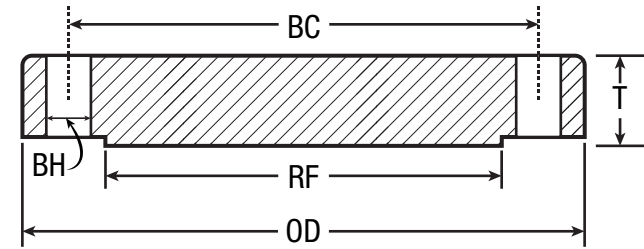


We strive to provide our customers with exceptional USA manufacturing quality products, economically that adhere to our ISO 9001:2015 Quality Program.

For more information on USA Industries products, contact us at (713) 941-3797 or go to www.USAIindustries.com



BLIND FLANGES MEET SA105 (CARBON STEEL) SPECIFICATIONS



- Line sizes 1/2" — 96"
- Flange ratings 150# — 2500#
- Raised Face or Ring Type Joint Gasket surfaces
- Provided for either Series A (MSS SP44) or Series B (API 605) meeting ASME B16.47 & B16.48 / ANSI B16.5 and B16.2 specifications
- Other blind specifications A182, A350, B160, etc. can be provided upon request for purchase

NPS	CLASS 150 ANSI B16.5						300 ANSI B16.5						600 ANSI B16.5						900 ANSI B16.5					
	OD OF FLANGE (OD)	DIA. OF BOLT CIRCLE (BC)	DIA. OF RAISED FACE (RF)	NO. OF BOLT HOLES	DIA. OF BOLT HOLE (BH)	BLIND THICKNESS (T)	OD OF FLANGE (OD)	DIA. OF BOLT CIRCLE (BC)	DIA. OF RAISED FACE (RF)	NO. OF BOLT HOLES	DIA. OF BOLT HOLE (BH)	BLIND THICKNESS (T)	OD OF FLANGE (OD)	DIA. OF BOLT CIRCLE (BC)	DIA. OF RAISED FACE (RF)	NO. OF BOLT HOLES	DIA. OF BOLT HOLE (BH)	BLIND THICKNESS (T)	OD OF FLANGE (OD)	DIA. OF BOLT CIRCLE (BC)	DIA. OF RAISED FACE (RF)	NO. OF BOLT HOLES	DIA. OF BOLT HOLE (BH)	BLIND THICKNESS (T)
SERIES A - ANSI 16.47																								
26	34.25	31.75	29.50	24	1.38	2.63	38.25	34.50	29.50	28	1.75	3.25	40.00	36.00	29.50	28	2.00	4.94	42.75	37.50	29.50	20	2.88	6.31
28	36.50	34.00	31.50	28	1.38	2.75	40.75	37.00	31.50	28	1.75	3.50	42.25	38.00	31.50	28	2.12	5.19	46.00	40.25	31.50	20	3.12	6.75
30	38.75	36.00	33.75	28	1.38	2.88	43.00	39.25	33.75	28	1.88	3.69	44.50	40.25	33.75	28	2.12	5.50	48.50	42.75	33.75	20	3.12	7.18
32	41.75	38.50	36.00	28	1.62	3.13	45.25	41.50	36.00	28	2.00	3.88	47.00	42.50	36.00	28	2.38	5.81	51.75	45.50	36.00	20	3.38	7.62
34	43.75	40.50	38.00	32	1.62	3.19	47.50	43.50	38.00	28	2.00	4.07	49.00	44.50	38.00	28	2.38	6.06	55.00	48.25	38.00	20	3.62	8.06
36	46.00	42.75	40.25	32	1.62	3.50	50.00	46.00	40.25	32	2.12	4.32	51.75	47.00	40.25	28	2.62	6.38	57.50	50.75	40.25	20	3.62	8.44
38	48.75	45.25	42.25	32	1.62	3.38	46.00	43.00	40.50	32	1.62	4.19	50.00	45.75	41.50	28	2.38	6.12	57.50	50.75	43.25	20	3.62	8.50
40	50.75	47.25	44.25	36	1.62	3.50	48.75	45.50	42.75	32	1.75	4.44	52.00	47.75	43.75	32	2.38	6.38	59.50	52.75	45.75	24	3.62	8.81
42	53.00	49.50	47.00	36	1.62	3.75	50.75	47.50	44.75	32	1.75	4.63	55.25	50.50	46.00	28	2.62	6.75	61.50	54.75	47.75	24	3.62	9.12
44	55.25	51.75	49.00	40	1.62	3.94	53.25	49.75	47.00	32	1.88	4.82	57.25	52.50	48.25	32	2.62	7.00	64.88	57.62	50.00	24	3.88	9.56
46	57.25	53.75	51.00	40	1.62	4.00	55.75	52.00	49.00	28	2.00	5.00	59.50	54.75	50.25	32	2.62	7.31	68.25	60.50	52.50	24	4.12	10.06
48	59.50	56.00	53.50	44	1.62	4.19	57.75	54.00	51.25	32	2.00	5.19	62.75	57.50	52.50	32	2.62	7.69	70.25	62.50	54.50	24	4.12	10.38
50	61.75	58.25	55.50	44	1.88	4.32	60.25	56.25	53.50	32	2.12	5.44	65.75	60.00	54.50	28	3.12	8.00						
52	64.00	60.50	57.50	44	1.88	4.50	62.25	58.25	-	32	2.12	5.63	67.75	62.00	-	32	3.12	8.25						
54	66.25	62.75	59.50	44	1.88	4.69	65.25	61.00	-	28	2.38	5.94	70.00	64.25	-	32	3.12	8.56						
56	68.75	65.00	62.00	48	1.88	4.82	67.25	63.00	-	28	2.38	6.00	73.00	66.75	-	32	3.38	8.88						
58	71.00	67.25	64.00	48	1.88	5.00	69.25	65.00	-	32	2.38	6.19	75.00	68.75	-	32	3.38	9.12						
60	73.00	69.25	66.00	52	1.88	5.13	71.25	67.00	-	32	2.38	6.38	78.50	71.75	-	28	3.62	9.56						
SERIES B - ANSI 16.47																								
26	30.94	29.31	28.00	36	0.88	1.75	34.12	31.62	29.00	32	1.38	3.50	35.00	31.75	28.62	28	1.75	4.38	40.25	35.50	30.00	20	2.62	6.06
28	32.94	31.31	30.00	40	0.88	1.88	36.25	33.75	31.00	36	1.38	3.50	37.50	34.00	30.88	28	1.88	4.56	43.50	38.25	32.25	20	2.88	6.56
30	34.94	33.31	32.00	44	0.88	2.00	39.00	36.25	33.25	36	1.50	3.69	40.25	36.50	33.12	28	2.00	5	46.50	40.75	34.50	20	3.12	6.93
32	37.06	35.44	34.00	48	0.88	2.12	41.50	38.50	35.50	32	1.62	4.06	42.75	38.75	35.25	28	2.12	5.31	48.75	43.00	36.50	20	3.12	7.31
34	39.56	37.69	36.25	40	1.00	2.25	43.62	40.62	37.50	36	1.62	4.06	45.75	41.50	37.50	24	2.38	5.68	51.75	45.50	39.00	20	3.38	7.68
36	41.62	39.75	38.25	44	1.00	2.31	46.12	42.88	39.75	32	1.75	4.06	47.75	43.50	39.75	28	2.38	5.94	53.00	47.25	40.50	24	3.12	7.94
38	44.25	42.12	40.25	40	1.12	2.50	48.12	44.88	41.75	36	1.75	4.38												
40	46.25	44.12	42.50	44	1.12	2.62	50.12	46.88	43.88	40	1.75	4.56												
42	48.25	46.12	44.50	48	1.12	2.69	52.50	49.00	46.00	36	1.88	4.69												
44	50.25	48.12	46.50	52	1.12	2.81	54.50	51.00	48.00	40	1.88	5.00												
46	52.81	50.56	48.62	40	1.25	2.94	57.50	53.75	50.00	36	2.00	5.12												
48	54.81	52.56	50.75	44	1.25	3.06	59.50	55.75	52.25	40	2.00	5.31												
50	56.81	54.56	52.75	48	1.25	3.18	61.50	57.75	54.25	44	2.00	5.50												
52	58.81	56.56	54.75	52	1.25	3.31	63.50	59.75	56.25	48	2.00	5.68												
54	61.00	58.75	56.75	56	1.25	3.44	65.88	62.12	58.25	48	2.00	5.88												
56	63.00	60.75	58.75	60	1.25	3.56	69.50	65.00	60.50	36	2.38	6.18												
58	65.94	63.44	60.75	48	1.38	3.68	71.94	67.44	62.75	40	2.38	6.38												
60	67.94	65.44	63.00	52	1.38	3.81	73.94	69.44	65.00	40	2.38	6.56												

We strive to provide our customers with exceptional USA manufacturing quality products, economically that adhere to our ISO 9001:2015 Quality Program.

For more information on USA Industries products, contact us at (713) 941-3797 or go to www.USAIindustries.com