

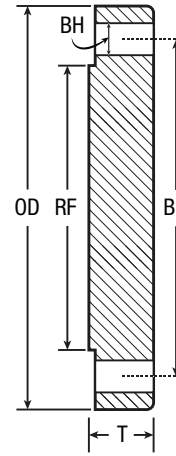
BLIND FLANGE SPECIFICATIONS

We strive to provide our customers with exceptional USA manufacturing quality products, economically that adhere to our ISO 9001:2015 Quality Program.



AVAILABLE FOR RENTAL AND SALE · READY TO SHIP 24/7 / 365

SPECIFICATION	DETAILS	
SIZES	1/2" – 96"	
FLANGE RATINGS	150# • 300# • 600# • 900# • 1500# • 2500#	
FACE OPTIONS	Flat • Raised • RTJ (Female/Males)	
COATING OPTIONS	Galvanized • Zinc Plated • Yellow Zinc Chromate	
STOCKED ALLOYS	SA516 Gr.70 Carbon Steel • 304 & 316 Stainless Steels (any available alloy upon request)	
PORT OPTIONS	NPT • SW (multiple ports can be added)	
AVAILABILITY	Purchase or Rent	
ASME STANDARD B16.5	ASME STANDARD B16.47 (26"+ Series A & B)	ADD'L ASTM SPEC OPTIONS A182, A350, B160, etc.



NPS	OD OF FLANGE (OD)	DIA. OF BOLT CIRCLE (BC)	DIA. OF RAISED FACE (RF)	NO. OF BOLT HOLES	DIA. OF BOLT HOLE (BH)	BLIND THK. (T)	OD OF FLANGE (OD)	DIA. OF BOLT CIRCLE (BC)	DIA. OF RAISED FACE (RF)	NO. OF BOLT HOLES	DIA. OF BOLT HOLE (BH)	BLIND THK. (T)	OD OF FLANGE (OD)	DIA. OF BOLT CIRCLE (BC)	DIA. OF RAISED FACE (RF)	NO. OF BOLT HOLES	DIA. OF BOLT HOLE (BH)	BLIND THK. (T)	OD OF FLANGE (OD)	DIA. OF BOLT CIRCLE (BC)	DIA. OF RAISED FACE (RF)	NO. OF BOLT HOLES	DIA. OF BOLT HOLE (BH)	BLIND THK. (T)	OD OF FLANGE (OD)	DIA. OF BOLT CIRCLE (BC)	DIA. OF RAISED FACE (RF)	NO. OF BOLT HOLES	DIA. OF BOLT HOLE (BH)	BLIND THK. (T)	OD OF FLANGE (OD)	DIA. OF BOLT CIRCLE (BC)	DIA. OF RAISED FACE (RF)	NO. OF BOLT HOLES	DIA. OF BOLT HOLE (BH)	BLIND THK. (T)	
CLASS 150 ANSI B16.5						300 ANSI B16.5						600 ANSI B16.5						900 ANSI B16.5						1500 ANSI 16.5						2500 ANSI B16.5							
1/2	3.50	2.38	1.38	4	0.62	0.44	3.75	2.62	1.38	4	0.63	0.56	3.75	2.62	1.38	4	0.63	0.56	4.75	3.25	1.38	4	0.88	0.88	4.75	3.25	1.38	4	0.88	0.88	5.25	3.50	1.38	4	0.88	1.19	
3/4	3.88	2.75	1.69	4	0.62	0.50	4.62	3.25	1.69	4	0.75	0.62	4.62	3.25	1.69	4	0.75	0.62	5.12	3.50	1.69	4	0.88	1.00	5.12	3.50	1.69	4	0.88	1.00	5.50	3.75	1.69	4	0.88	1.25	
1	4.25	3.12	2.00	4	0.62	0.56	4.88	3.50	2.00	4	0.75	0.69	4.88	3.50	2.00	4	0.75	0.69	5.88	4.00	2.00	4	1.00	1.12	5.88	4.00	2.00	4	1.00	1.12	6.25	4.25	2.00	4	1.00	1.38	
1-1/4	4.62	3.50	2.50	4	0.62	0.62	5.25	3.88	2.50	4	0.75	0.75	5.25	3.88	2.50	4	0.75	0.81	6.25	4.38	2.50	4	1.00	1.12	6.25	4.38	2.50	4	1.00	1.12	7.25	5.13	2.50	4	1.12	1.50	
1-1/2	5.00	3.88	2.88	4	0.62	0.69	6.12	4.50	2.88	4	0.88	0.81	6.12	4.50	2.88	4	0.88	0.88	7.00	4.88	2.88	4	1.12	1.25	7.00	4.88	2.88	4	1.12	1.25	8.00	5.75	2.88	4	1.25	1.75	
2	6.00	4.75	3.63	4	0.75	0.75	6.50	5.00	3.62	8	0.75	0.88	6.50	5.00	3.62	8	0.75	1.00	8.50	6.50	3.63	8	1.00	1.50	8.50	6.50	3.63	8	1.00	1.50	9.25	6.75	3.63	8	1.12	2.00	
2-1/2	7.00	5.50	4.13	4	0.75	0.88	7.50	5.88	4.12	8	0.88	1.00	7.50	5.88	4.12	8	0.88	1.12	9.62	7.50	4.13	8	1.13	1.62	9.62	7.50	4.13	8	1.12	1.62	10.50	7.75	4.13	8	1.25	2.25	
3	7.50	6.00	5.00	4	0.75	0.94	8.25	6.62	5.00	8	0.88	1.12	8.25	6.62	5.00	8	0.88	1.25	9.50	7.50	5.00	8	1.00	1.50	10.50	8.00	5.00	8	1.25	1.88	12.00	9.00	5.00	8	1.38	2.62	
3-1/2	8.50	7.00	5.50	8	0.75	0.94	9.00	7.25	5.50	8	0.88	1.19	9.00	7.25	5.50	8	1.00	1.38	—	—	—	—	—	—	—	—	—	—	—	—	—	—	—	—	—	—	—
4	9.00	7.50	6.19	8	0.75	0.94	10.00	7.88	6.19	8	0.88	1.25	10.75	8.50	6.19	8	1.00	1.50	11.50	9.25	6.19	8	1.25	1.75	12.25	9.50	6.19	8	1.38	2.12	14.00	10.75	6.19	8	1.63	3.00	
5	10.00	8.50	7.31	8	0.88	0.94	11.00	9.25	7.31	8	0.88	1.38	13.00	10.50	7.31	8	1.12	1.75	13.75	11.00	7.31	8	1.38	2.00	14.75	11.50	7.31	8	1.63	2.88	16.50	12.75	7.31	8	1.88	3.62	
6	11.00	9.50	8.50	8	0.88	1.00	12.50	10.62	8.50	12	0.88	1.44	14.00	11.50	8.50	12	1.12	1.88	15.00	12.50	8.50	12	1.25	2.19	15.50	12.50	8.50	12	1.50	3.25	19.00	14.50	8.50	8	2.12	4.25	
8	13.50	11.75	10.63	8	0.88	1.12	15.00	13.00	10.62	12	1.00	1.62	16.50	13.75	10.62	12	1.25	2.19	18.50	15.50	10.63	12	1.50	2.50	19.00	15.50	10.63	12	1.75	3.62	21.75	17.25	10.63	12	2.12	5.00	
10	16.00	14.25	12.75	12	1.00	1.19	17.50	15.25	12.75	16	1.12	1.88	20.00	17.00	12.75	16	1.38	2.50	21.50	18.50	12.75	16	1.50	2.75	23.00	19.00	12.75	12	2.00	4.25	26.50	21.25	12.75	12	2.63	6.50	
12	19.00	17.00	15.00	12	1.00	1.25	20.50	17.75	15.00	16	1.25	2.00	22.00	19.25	15.00	20	1.38	2.62	24.00	21.00	15.00	20	1.50	3.12	26.50	22.50	15.00	16	2.12	4.88	30.00	24.38	15.00	12	2.88	7.25	
14	21.00	18.75	16.25	12	1.12	1.38	23.00	20.25	16.25	20	1.25	2.12	23.75	20.75	16.25	20	1.50	2.75	25.25	22.00	16.25	20	1.63	3.38	29.50	25.00	16.25	16	2.38	5.25	—	—	—	—	—	—	
16	23.50	21.25	18.50	16	1.12	1.44	25.50	22.50	18.50	20	1.38	2.25	27.00	23.75	18.50	20	1.63	3.00	27.75	24.25	18.50	20	1.75	3.50	32.50	27.75	18.50	16	2.63	5.75	—	—	—	—	—	—	
18	25.00	22.75	21.00	16	1.25	1.56	28.00	24.75	21.00	24	1.38	2.38	29.25	25.75	21.00	20	1.75	3.25	31.00	27.00	21.00	20	2.00	4.00	36.00	30.50	21.00	16	2.88	6.38	—	—	—	—	—	—	
20	27.50	25.00	23.00	20	1.25	1.69	30.50	27.00	23.00	24	1.38	2.50	32.00	28.50	23.00	24	1.75	3.50	33.75	29.50	23.00	20	2.13	4.25	38.75	32.75	23.00	16	3.12	7.00	—	—	—	—	—	—	
22	29.50	27.25	25.25	20	1.38	1.81	33.00	29.25	25.25	24	1.63	2.63	34.25	30.63	25.25	24	1.75	3.75	—	—	—	—	—	—	—	—	—	—	—	—	—	—	—	—	—	—	
24	32.00	29.50	27.25	20	1.38	1.88	36.00	32.00	27.25	24	1.63	2.75	37.00	33.00	27.25	24	2.00	4.00	41.00	35.50	27.25	20	2.63	5.50	46.00	39.00	27.25	16	3.63	8.00	—	—	—	—	—	—	

BLIND FLANGE SPECIFICATIONS

We strive to provide our customers with exceptional USA manufacturing quality products, economically that adhere to our ISO 9001:2015 Quality Program.



AVAILABLE FOR RENTAL AND SALE · READY TO SHIP 24/7 / 365

ANSI 16.47 - SERIES A																								
NPS	OD OF FLANGE (OD)	DIA. OF BOLT CIRCLE (BC)	DIA. OF RAISED FACE (RF)	NO. OF BOLT HOLES	DIA. OF BOLT HOLE (BH)	BLIND THK. (T)	OD OF FLANGE (OD)	DIA. OF BOLT CIRCLE (BC)	DIA. OF RAISED FACE (RF)	NO. OF BOLT HOLES	DIA. OF BOLT HOLE (BH)	BLIND THK. (T)	OD OF FLANGE (OD)	DIA. OF BOLT CIRCLE (BC)	DIA. OF RAISED FACE (RF)	NO. OF BOLT HOLES	DIA. OF BOLT HOLE (BH)	BLIND THK. (T)	OD OF FLANGE (OD)	DIA. OF BOLT CIRCLE (BC)	DIA. OF RAISED FACE (RF)	NO. OF BOLT HOLES	DIA. OF BOLT HOLE (BH)	BLIND THK. (T)
CLASS 150 ANSI B16.5							300 ANSI B16.5						600 ANSI B16.5						900 ANSI B16.5					
26	34.25	31.75	29.50	24	1.38	2.63	38.25	34.50	29.50	28	1.75	3.25	40.00	36.00	29.50	28	2.00	4.94	42.75	37.50	29.50	20	2.88	6.31
28	36.50	34.00	31.50	28	1.38	2.75	40.75	37.00	31.50	28	1.75	3.50	42.25	38.00	31.50	28	2.12	5.19	46.00	40.25	31.50	20	3.12	6.75
30	38.75	36.00	33.75	28	1.38	2.88	43.00	39.25	33.75	28	1.88	3.69	44.50	40.25	33.75	28	2.12	5.50	48.50	42.75	33.75	20	3.12	7.18
32	41.75	38.50	36.00	28	1.62	3.13	45.25	41.50	36.00	28	2.00	3.88	47.00	42.50	36.00	28	2.38	5.81	51.75	45.50	36.00	20	3.38	7.62
34	43.75	40.50	38.00	32	1.62	3.19	47.50	43.50	38.00	28	2.00	4.07	49.00	44.50	38.00	28	2.38	6.06	55.00	48.25	38.00	20	3.62	8.06
36	46.00	42.75	40.25	32	1.62	3.50	50.00	46.00	40.25	32	2.12	4.32	51.75	47.00	40.25	28	2.62	6.38	57.50	50.75	40.25	20	3.62	8.44
38	48.75	45.25	42.25	32	1.62	3.38	46.00	43.00	40.50	32	1.62	4.19	50.00	45.75	41.50	28	2.38	6.12	57.50	50.75	43.25	20	3.62	8.50
40	50.75	47.25	44.25	36	1.62	3.50	48.75	45.50	42.75	32	1.75	4.44	52.00	47.75	43.75	32	2.38	6.38	59.50	52.75	45.75	24	3.62	8.81
42	53.00	49.50	47.00	36	1.62	3.75	50.75	47.50	44.75	32	1.75	4.63	55.25	50.50	46.00	28	2.62	6.75	61.50	54.75	47.75	24	3.62	9.12
44	55.25	51.75	49.00	40	1.62	3.94	53.25	49.75	47.00	32	1.88	4.82	57.25	52.50	48.25	32	2.62	7.00	64.88	57.62	50.00	24	3.88	9.56
46	57.25	53.75	51.00	40	1.62	4.00	55.75	52.00	49.00	28	2.00	5.00	59.50	54.75	50.25	32	2.62	7.31	68.25	60.50	52.50	24	4.12	10.06
48	59.50	56.00	53.50	44	1.62	4.19	57.75	54.00	51.25	32	2.00	5.19	62.75	57.50	52.50	32	2.62	7.69	70.25	62.50	54.50	24	4.12	10.38
50	61.75	58.25	55.50	44	1.88	4.32	60.25	56.25	53.50	32	2.12	5.44	65.75	60.00	54.50	28	3.12	8.00	-	-	-	-	-	-
52	64.00	60.50	57.50	44	1.88	4.50	62.25	58.25	-	32	2.12	5.63	67.75	62.00	-	32	3.12	8.25	-	-	-	-	-	-
54	66.25	62.75	59.50	44	1.88	4.69	65.25	61.00	-	28	2.38	5.94	70.00	64.25	-	32	3.12	8.56	-	-	-	-	-	-
56	68.75	65.00	62.00	48	1.88	4.82	67.25	63.00	-	28	2.38	6.00	73.00	66.75	-	32	3.38	8.88	-	-	-	-	-	-
58	71.00	67.25	64.00	48	1.88	5.00	69.25	65.00	-	32	2.38	6.19	75.00	68.75	-	32	3.38	9.12	-	-	-	-	-	-
60	73.00	69.25	66.00	52	1.88	5.13	71.25	67.00	-	32	2.38	6.38	78.50	71.75	-	28	3.62	9.56	-	-	-	-	-	-

ANSI 16.47 - SERIES B																								
NPS	OD OF FLANGE (OD)	DIA. OF BOLT CIRCLE (BC)	DIA. OF RAISED FACE (RF)	NO. OF BOLT HOLES	DIA. OF BOLT HOLE (BH)	BLIND THK. (T)	OD OF FLANGE (OD)	DIA. OF BOLT CIRCLE (BC)	DIA. OF RAISED FACE (RF)	NO. OF BOLT HOLES	DIA. OF BOLT HOLE (BH)	BLIND THK. (T)	OD OF FLANGE (OD)	DIA. OF BOLT CIRCLE (BC)	DIA. OF RAISED FACE (RF)	NO. OF BOLT HOLES	DIA. OF BOLT HOLE (BH)	BLIND THK. (T)	OD OF FLANGE (OD)	DIA. OF BOLT CIRCLE (BC)	DIA. OF RAISED FACE (RF)	NO. OF BOLT HOLES	DIA. OF BOLT HOLE (BH)	BLIND THK. (T)
CLASS 150 ANSI B16.5							300 ANSI B16.5						600 ANSI B16.5						900 ANSI B16.5					
26	30.94	29.31	28.00	36	0.88	1.75	34.12	31.62	29.00	32	1.38	3.50	35.00	31.75	28.62	28	1.75	4.38	40.25	35.50	30.00	20	2.62	6.06
28	32.94	31.31	30.00	40	0.88	1.88	36.25	33.75	31.00	36	1.38	3.50	37.50	34.00	30.88	28	1.88	4.56	43.50	38.25	32.25	20	2.88	6.56
30	34.94	33.31	32.00	44	0.88	2.00	39.00	36.25	33.25	36	1.50	3.69	40.25	36.50	33.12	28	2.00	5	46.50	40.75	34.50	20	3.12	6.93
32	37.06	35.44	34.00	48	0.88	2.12	41.50	38.50	35.50	32	1.62	4.06	42.75	38.75	35.25	28	2.12	5.31	48.75	43.00	36.50	20	3.12	7.31
34	39.56	37.69	36.25	40	1.00	2.25	43.62	40.62	37.50	36	1.62	4.06	45.75	41.50	37.50	24	2.38	5.68	51.75	45.50	39.00	20	3.38	7.68
36	41.62	39.75	38.25	44	1.00	2.31	46.12	42.88	39.75	32	1.75	4.06	47.75	43.50	39.75	28	2.38	5.94	53.00	47.25	40.50	24	3.12	7.94
38	44.25	42.12	40.25	40	1.12	2.50	48.12	44.88	41.75	36	1.75	4.38	-	-	-	-	-	-	-	-	-	-	-	-
40	46.25	44.12	42.50	44	1.12	2.62	50.12	46.88	43.88	40	1.75	4.56	-	-	-	-	-	-	-	-	-	-	-	-
42	48.25	46.12	44.50	48	1.12	2.69	52.50	49.00	46.00	36	1.88	4.69	-	-	-	-	-	-	-	-	-	-	-	-
44	50.25	48.12	46.50	52	1.12	2.81	54.50	51.00	48.00	40	1.88	5.00	-	-	-	-	-	-	-	-	-	-	-	-
46	52.81	50.56	48.62	40	1.25	2.94	57.50	53.75	50.00	36	2.00	5.12	-	-	-	-	-	-	-	-	-	-	-	-
48	54.81	52.56	50.75	44	1.25	3.06	59.50	55.75	52.25	40	2.00	5.31	-	-	-	-	-	-	-	-	-	-	-	-
50	56.81	54.56	52.75	48	1.25	3.18	61.50	57.75	54.25	44	2.00	5.50	-	-	-	-	-	-	-	-	-	-	-	-
52	58.81	56.56	54.75	52	1.25	3.31	63.50	59.75	56.25	48	2.00	5.68	-	-	-	-	-	-	-	-	-	-	-	-
54	61.00	58.75	56.75	56	1.25	3.44	65.88	62.12	58.25	48	2.00	5.88	-	-	-	-	-	-	-	-	-	-	-	-
56	63.00	60.75	58.75	60	1.25	3.56	69.50	65.00	60.50	36	2.38	6.18	-	-	-	-	-	-	-	-	-	-	-	-
58	65.94	63.44	60.75	48	1.38	3.68	71.94	67.44	62.75	40	2.38	6.38	-	-	-	-	-	-	-	-	-	-	-	-
60	67.94	65.44	63.00	52	1.38	3.81	73.94	69.44	65.00	40	2.38	6.56	-	-	-	-	-	-	-	-	-	-	-	-